

## Analysis of cardiac and pulmonary complication probabilities after radiation therapy for patients with early-stage breast cancer

Olga Utehina<sup>1,2</sup>, Sergejs Popovs<sup>1,2</sup>, Dace Purina<sup>1,2</sup>, Ingrida Slosberga<sup>1,2</sup>, Ilga Vevere<sup>1,2</sup>,  
Dzintars Emzins<sup>1,2</sup>, Juris Berzins<sup>1,2</sup>, Konstantinas Povilas Valuckas<sup>3</sup>,  
Ernestas Janulionis<sup>3</sup>, Albert Miller<sup>3</sup>

<sup>1</sup>Latvian Oncology Center, Riga Eastern Clinical University Hospital, <sup>2</sup>University of Latvia, Latvia,

<sup>3</sup>Institute of Oncology, Vilnius University, Lithuania

**Key words:** respiratory-gated radiotherapy; early-stage breast cancer; breast-conserving therapy; normal tissue complication probability.

**Summary.** *Objective.* The purpose of this study was to evaluate the radiobiological implications of clinical use of respiratory-gated techniques for postoperative radiation therapy of early-stage left-sided breast cancer after breast-conserving surgery.

*Material and methods.* Radiation therapy treatment plans of 80 patients with early-stage breast cancer (stage I–II), receiving whole breast irradiation after breast-conserving therapy, were analyzed. The control group consisting of 47 patients received standard radiation therapy, and the respiratory-gated group consisting of 33 patients received deep inspiration-gated radiation therapy. Normal tissue complication probabilities (NTCP) for cardiac mortality and for clinical radiation-induced pneumonitis were calculated for all patients included in present study, using relative seriality model. NTCP data were analyzed for 113 radiation therapy plans, which included free breathing plans for the respiratory-gated groups.

*Results.* Pneumonitis probability was 0.6% (range 0.0–2.8%) and 0.3% (0.0–1.2%) for control and respiratory-gated group, respectively. Cardiac mortality was 1.3% (0.0–5.0%) and 0.2% (0.0–2.8%) for control and respiratory-gated group, respectively. Using respiratory-gated radiation therapy, NTCP was reduced in comparison with the control group by 83% ( $P < 0.00001$ ) and by 55% ( $P = 0.01270$ ) for cardiac mortality and for clinical radiation-induced pneumonitis, respectively.

*Conclusions.* Use of respiratory-gated radiation therapy, for postoperative treatment of early-stage breast cancer, significantly reduces excessive cardiac mortality probability and pulmonary complication probability, as compared to standard radiation therapy techniques. This is especially important from heart complication probability point of view, as cardiac mortality remains one of the important issues of postoperative breast irradiation in patients with early stage breast cancer.

### Introduction

Radiotherapy is an essential part of breast-conserving therapy for patients with early stage breast cancer (1). Randomized trials conducted with a large number of patients have shown that radiotherapy (RT) after breast-conserving surgery significantly reduces local recurrence rate (2, 3). Furthermore, results of studies with more than 20-year follow-up have proven that lumpectomy with adjuvant whole breast RT for patients with early stage breast cancer equals to mastectomy by local recurrence rate and overall survival (2, 4).

Recent meta-analysis of data of trials performed worldwide has shown that RT after breast-conserving

surgery significantly increases patient survival (5).

Study by Buchholz et al. demonstrated that for clinical stage II breast cancer, breast-conserving surgery with following RT provides statistically significant increase in survival, comparing to mastectomy without radiotherapy (6). Recently Vicini et al. demonstrated that some distant metastases could directly develop from recurrence in ipsilateral breast, so supporting the importance of local tumor control in the overall treatment of patients with breast cancer (7).

Standard RT method after breast-conserving surgery is whole remaining breast irradiation with two tangential fields (regional lymph nodes are irradiated according to indications) (8–10). During whole breast

irradiation, normal organs, such as lung and, in the case of left breast irradiation, heart, are unavoidably included in high-dose region, and so serious radiotherapy damage to these organs can occur (11–13). Early toxicity occurs mostly in skin tissue, but radiation dose does not induce heavy damage to skin, and such acute reactions are transient and clinically insignificant (10, 14). Late reactions, developing in healthy lung and heart tissue included in tangential fields, are clinically significant (14). Most significant heart RT complications are related to myocardium damage and are generally responsible for the excessive cardiac mortality in patients with breast cancer after radiotherapy (15–21). According to Gagliardi et al., excessive cardiac mortality in patients with breast cancer after whole breast irradiation with a prescribed dose of 50 Gy is 12% from myocardium damage and 9% from radiation damage of other heart structures (22). Multiple studies proved that probability of development of late complications in heart and lung (23–28) as well as grade of complications is correlated with relative organ volume, which receives clinically relevant dose (26, 29).

Clinical results of RT should be always balanced with probable acute and late radiotherapy complications (30–33). In order to reduce probability of the development of late complications, various modern RT technologies allowing sparing of normal tissues are introduced in clinical practice (10, 34).

According to data by Muren et al., significant heart and lung complication reduction is achieved using three-dimensional conformal radiotherapy (3D-CRT), comparing with two-dimensional conventional RT (11). However, even nowadays with wide use of 3D-CRT, excess cardiac mortality still persists in patients with breast cancer, receiving postoperative RT courses, as compared to normal age-matched female population (35).

In last few years, a new RT technique – respiratory-gated (RG) RT, using various patient breathing adaptation techniques – is being implemented in many clinics around the world. This method has potential to reduce significantly heart and lung RT complications, especially in case of postoperative whole breast irradiation (36). This is especially important in case of patients with early stage breast cancer, which nowadays have very good prognosis and long life expectancy (2, 4, 6).

It has been demonstrated in several studies that breathing adaptation techniques can be used to reduce the irradiated heart and lung volumes, primarily by utilizing lung inflation, which dilutes the amount of

lung tissue in the radiation fields and separates the heart from the target, providing significant lung and heart dose reductions (37, 38). Two dose-modeling computed tomography studies have shown that both voluntary deep inspiration breath-hold and free breathing inspiration gating can provide similar lung and heart dose reductions (39, 40). Study by Pedersen et al. has shown that deep inspiration voluntary breath hold (DIVBH) respiratory-gated radiotherapy (RGRT) technique for breast cancer yields superior dosimetric consequences for all organs at risk as well as target volumes, comparing to free breathing and deep expiration breath hold irradiation techniques (39).

DIVBH RGRT technique is clinically implemented with the RPM system (Varian Medical Systems, Inc., Palo Alto, CA) at the Latvian Oncology Center. Pedersen et al. and Korreman et al. demonstrated that implemented DIVBH RGRT technique is reproducible and safe as well as maintains the target dose coverage and homogeneity and does not compromise doses to contralateral organs (39, 40).

The purpose of this study was to evaluate the radiobiological implications of clinical use of respiratory-gated techniques for postoperative radiotherapy of early-stage left-sided breast cancer. Normal tissue complication probability (NTCP) analysis for heart and lung has been performed to evaluate possible benefits of deep inspiration breath hold respiratory-gated radiotherapy in well selected group of patients. This is the first publication presenting results of application of RG radiotherapy to a homogeneous cohort of patients with early-stage breast cancer, as all studies published before included NTCP analysis for heterogeneous groups of patients, employing different target volumes and irradiation techniques.

## **Material and methods**

*Patient selection.* Patients with left-sided breast cancer (stage I–II) were included in present study. All patients received breast-conserving surgery and hormonal and/or chemotherapy according to indications. Patients were randomized into two groups. First group received standard radiotherapy course, and second group – RG radiotherapy.

Starting from November 2006, RGRT was successfully performed for 33 women in Latvian Oncology Center of Riga Eastern Clinical University Hospital. Data of these patients were included in the present analysis as RGRT group. Forty-seven women were enrolled in the control group, which received standard three-dimensional conformal therapy treatment for whole breast. In total, data of treatment plans of 80

patients were analyzed in the current study.

**Patient data acquisition and treatment planning.** For RGRT group, the RPM system (Varian Medical Systems, Inc.) was used for respiration monitoring and manual prospective respiratory gating of a LightSpeed RT (GE Medical Systems) multi-slice scanner and gating of Clinac 2100 C/D (Varian Medical Systems, Inc.) medical linear accelerator. Before acquisition of computed tomography (CT) scan during preliminary training session, the patient was trained on DIVBH technique. DIVBH pattern was individualized to each patient, using manual audio breathing instructions. The patient was immobilized supine in indexed vacuum bag, with both arms above her head. The gating marker box was placed on the chest wall of the patient, on bony structure for breathing reproducibility, and outside radiation fields to avoid skin reactions. The CT scanning was performed as a manually prospectively gated spiral scan in the end-inspiration phase of respiration with a slice thickness of 3.75 mm. Free breathing (not gated) CT study was obtained prior to acquisition of the gated study. For control group, free breathing (not gated) CT study was performed using same positioning aids and scanning protocol. On each CT study of each patient, clinical target volume (CTV), including whole remaining breast and normal anatomy were contoured. CTV to planning target volume (PTV) expansion was performed in the same way for all patients in all groups, following usual clinical protocols. For RGRT group, contouring of target volumes and normal anatomy was performed as on gated as on not-gated CT studies. Conformal treatment plans, achieving full coverage of the remaining breast with 95% isodose, were individually optimized for each patient, with a prescription dose of 50 Gy (2 Gy/fraction, 5 weeks). Dose delivery was performed using 6 MV tangential photon fields with multileaf collimator (MLC) and wedges.

In both groups, equal boost dose (10 Gy in 5 fractions) was delivered by means of electron beam to lumpectomy cavity.

Cardiac and pulmonary complication probabilities were calculated for postoperative radiation therapy plans of 80 patients with early-stage left-sided breast cancer. Thirty-three patients received respiratory-gated radiation therapy (RGRT group) and 47 patients standard 3D-CRT (control group). Additional treatment plan on the free breathing CT series was created for each patient in the RGRT group. This allowed direct comparison of the clinical parameters of the free breathing (FB) and RG DIVBH treatment plans for each patient in the RGRT group.

In total, data of 113 treatment plans were analyzed in the present work: 33 deep inspiration gated radiotherapy plans and 80 FB plans.

**Calculation of normal tissue complication probabilities.** NTCPs for lung and heart were used for evaluation and comparison of treatment plans. NTCPs were calculated from dose volume histograms (DVH) of organs of interest using radiobiological modeling (10, 41, 42).

For each treatment plan, heart and lung NTCPs were calculated using relative seriality (RS) radiobiological model (43). Before calculation, DVH data were converted to the dose biologically effective to 2 Gy per fraction irradiation, using linear-quadratic model ( $\alpha/\beta$  was equal to 3 Gy for both lung and heart) (44, 45). For the left lung, clinical pneumonitis of grade greater than 2 was used as endpoint in NTCP calculation. In the case of heart, NTCP calculation endpoint was excessive cardiac mortality in the irradiated patients with left-sided breast cancer. RS model coefficients used for lung and heart NTCP calculation in this study were obtained from data analysis of patients with breast cancer by Gagliardi et al. (22, 46).

**Statistical analysis.** NTCP data of control group were compared with RGRT group NTCP data, using Mann-Whitney *U* test. For the RGRT group, NTCP data of two treatment plans – deep inspiration and free breathing treatment plan – were compared for each patient using Wilcoxon test.

## Results

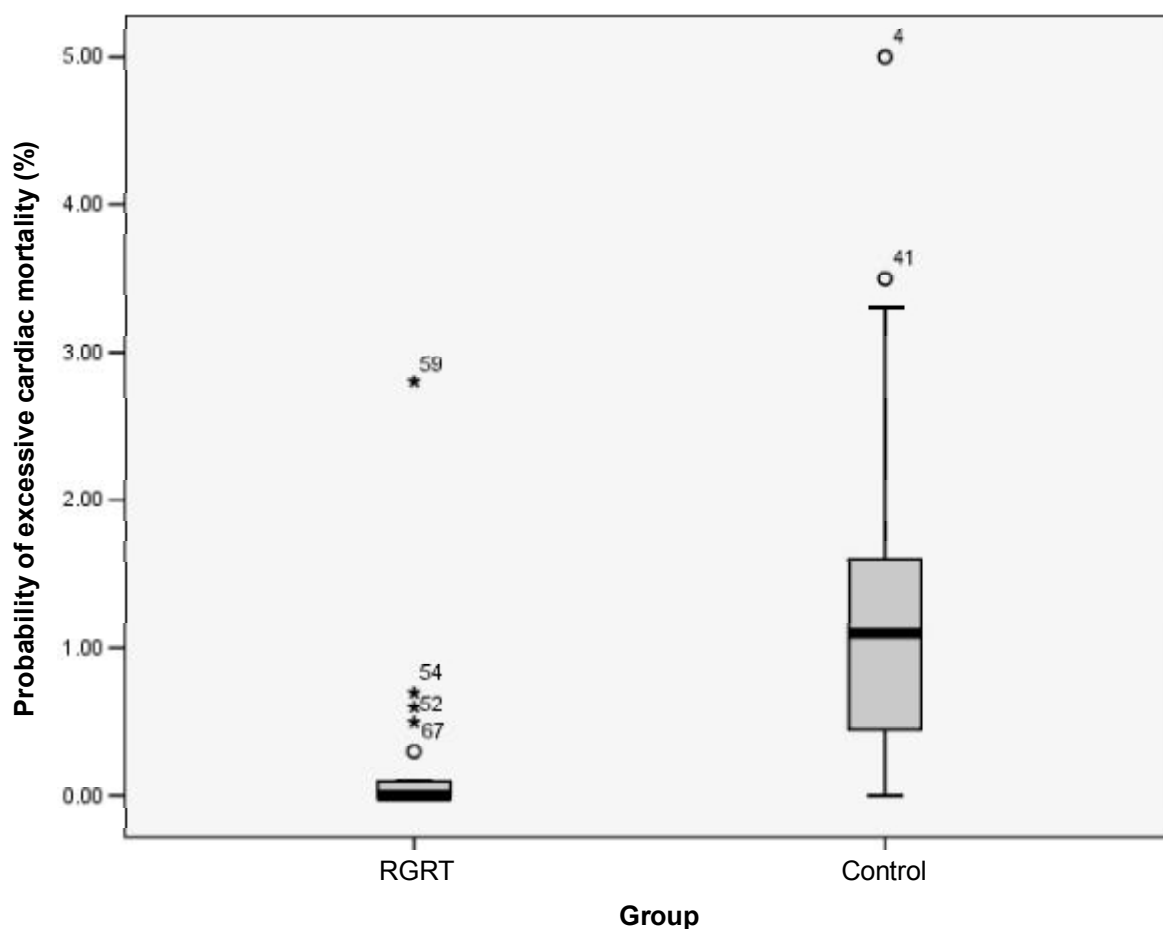
Table 1 shows NTCP data for heart and left lung, calculated using RS model for all patients under investigation. The use of respiratory-gated radiotherapy leads to statistically significant reduction of the NTCPs for both heart and left lung. The mean NTCP values as well as interval of NTCP values are reduced for RGRT group.

Figure 1 shows excessive cardiac mortality probability steam and leaf plot for the respiratory-gated and standard radiation therapy groups. Plot for the control group shows a wider extension of quartiles as compared to the RGRT group. Plot for the RGRT group shows compact probability distribution and lower mean NTCP value in comparison with plot for the control group. Central quartiles of NTCP values do not cross between two plots.

Figure 2 shows radiation-induced pneumonitis probability steam and leaf plot for the respiratory-gated and standard radiation therapy groups. Plot of NTCP values for the RGRT group shows lower mean NTCP value and more compact probability distribution as

**Table 1. Heart and left lung normal tissue complication probabilities data**

Parameter	Standard radiation therapy		Respiratory-gated radiation therapy		Parameter relative reduction (%)	<i>P</i>
	mean (%)	interval (%)	mean (%)	interval (%)		
Probability of excessive cardiac mortality	1.3	0.0–5.0	0.2	0.0–2.8	83	<0.00001
Probability of clinical pneumonitis	0.6	0.0–2.8	0.3	0.0–1.2	55	0.01270

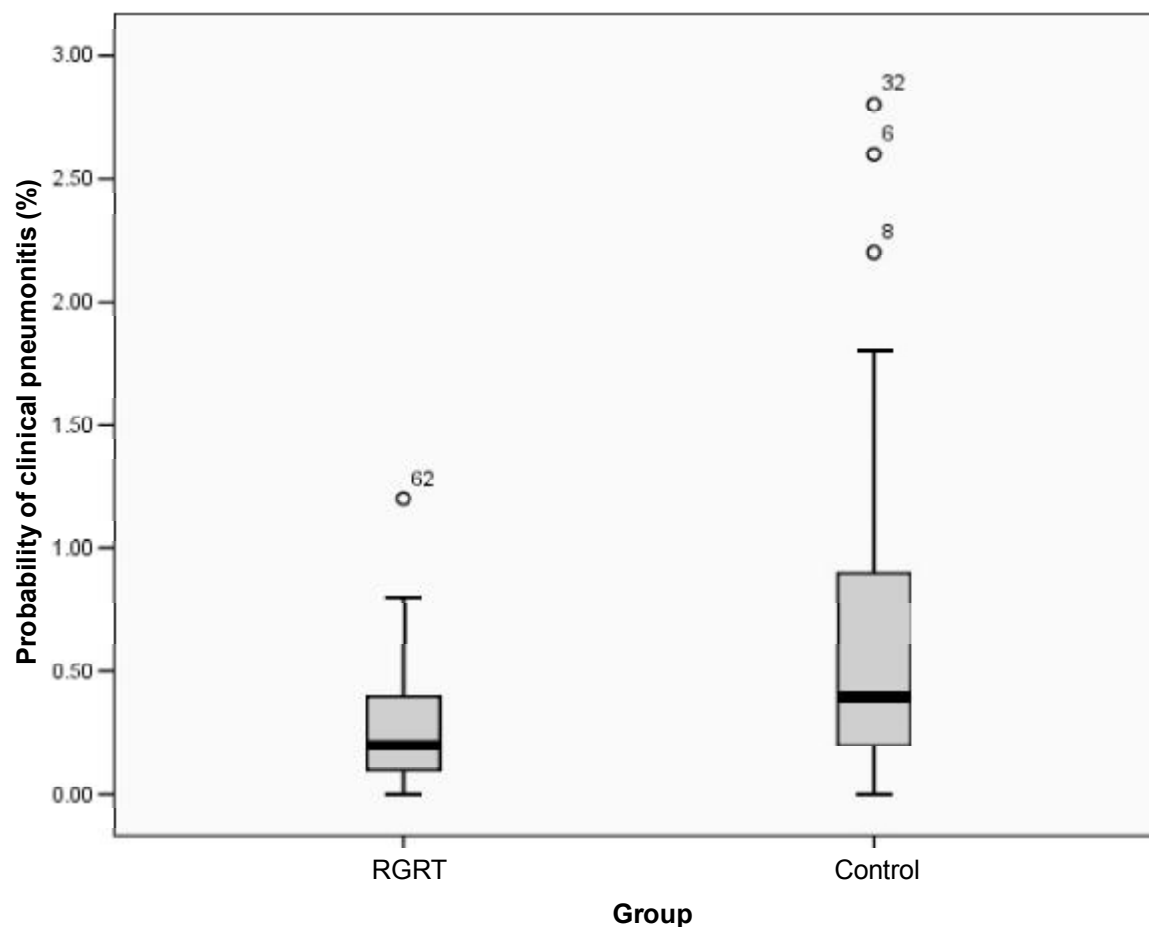
**Fig. 1. Excessive cardiac mortality probability stem and leaf plot for the respiratory-gated and standard radiation therapy groups**

compared to NTCP values plot of the control group.

Table 2 shows the compilation of NTCP data for group, which received respiratory-gated radiation therapy, presenting results of analysis of NTCP data for two treatment plans for each patient in the RGRT group – treatment during deep inspiration breath cycle breathing cycle phase (DIVBH plan) and treatment during free breathing (FB plan). Application of respiratory-gated radiotherapy leads to statistically significant reduction of the NTCP for both heart and left

lung. The mean NTCP values as well as interval of NTCP values are significantly reduced for the RGRT group.

Figure 3 shows excessive cardiac mortality probability stem and leaf plot for radiation therapy gated at deep inspiration and free breathing radiation therapy treatment plans of patients in the RGRT group. Data of FB plans show wider extension of quartiles as compared to DIVBH plans. Plot for DIVBH plans shows a compact probability distribution and lower mean



**Fig. 2.** Radiation induced pneumonitis probability steam and leaf plot for the respiratory-gated and standard radiation therapy groups

**Table 2.** Heart and left lung normal tissue complication probabilities data for radiation therapy gated at deep inspiration and free breathing radiation therapy

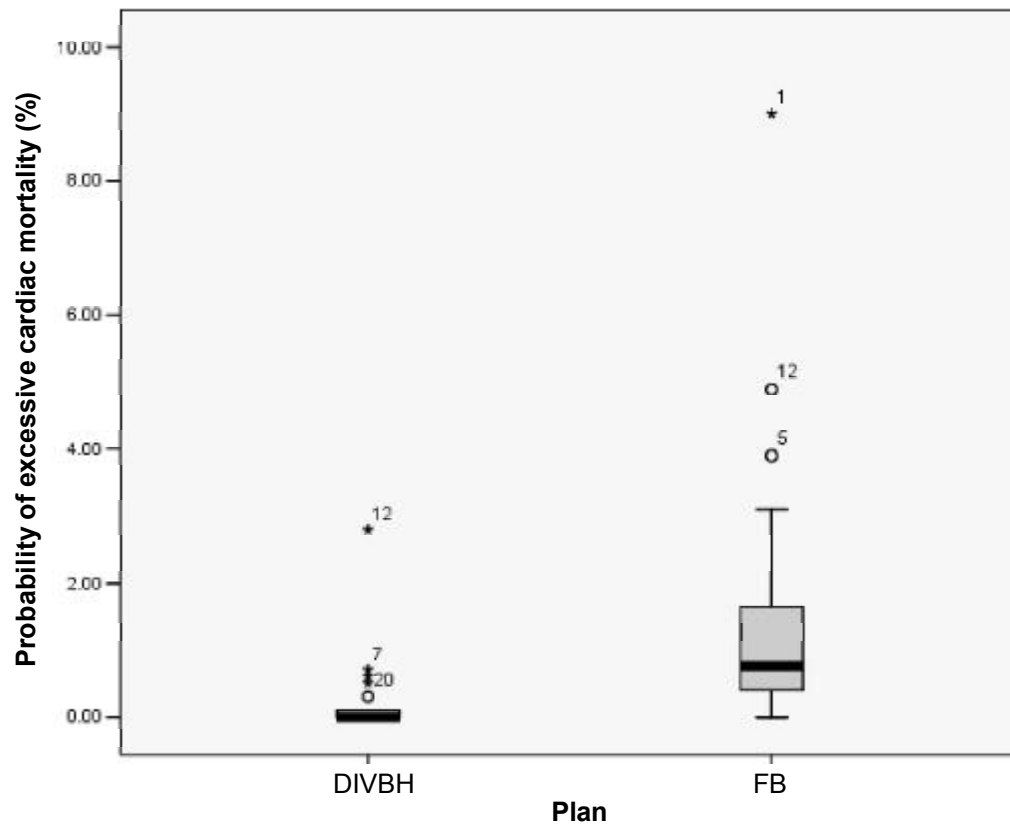
Parameter	Free breathing		Deep inspiration breath hold		Parameter relative reduction (%)	<i>P</i>
	mean (%)	interval (%)	mean (%)	interval (%)		
Probability of excessive cardiac mortality	1.5	0.0–9.0	0.2	0.0–2.8	86	0.00008
Probability of clinical pneumonitis	1.0	0.1–3.6	0.3	0.0–1.2	71	0.00012

NTCP value in comparison with plot for FB plans. Central quartiles of NTCP values do not cross between two plots.

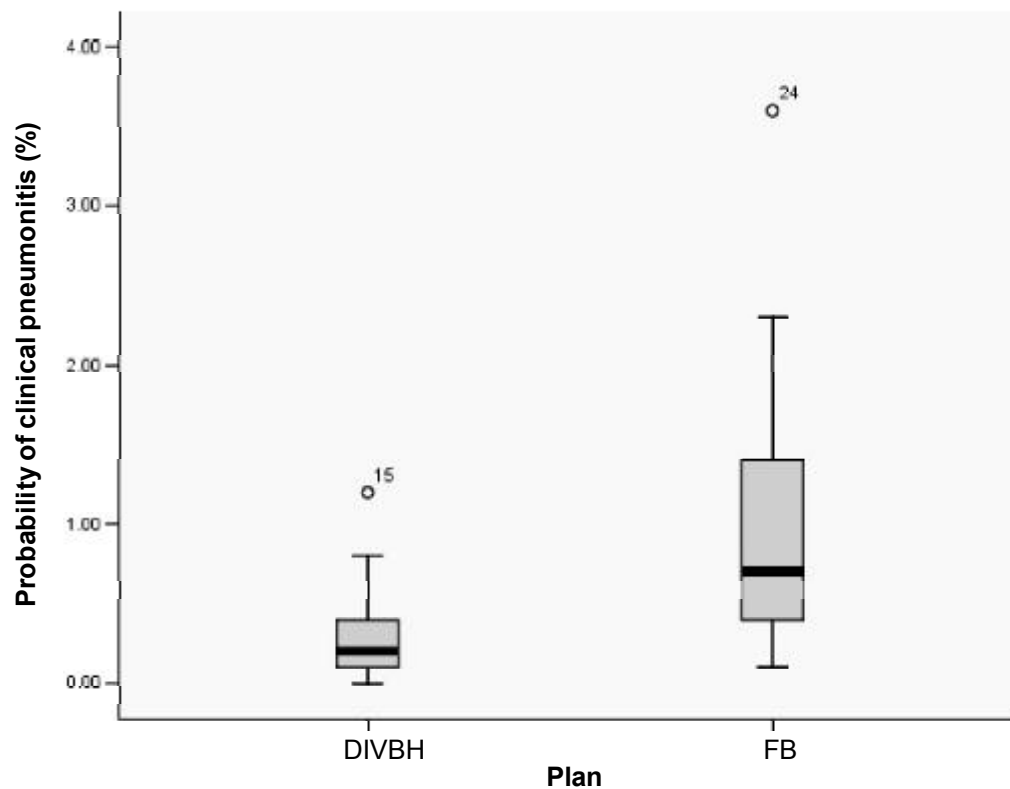
Figure 4 shows radiation-induced pneumonitis probability steam and leaf plot for radiation therapy gated at deep inspiration and free breathing radiation therapy treatment plans of patients in the RGRT group. Plot of NTCP values of DIVBH plans shows lower mean NTCP value and more compact probability distribution as compared to plot of NTCP values of FB plans.

### Discussion

In last years, the number of patients with early-stage breast cancer is increasing worldwide (47). Breast-conserving therapy with surgery and postoperative radiotherapy is used more frequently (8, 48). Patients with early-stage breast cancer have an excellent prognosis and long life expectance, so it is very important to reduce manifestation rate of serious late complications to absolute minimum (49). Late complications negatively affect life quality and can lead to patient death (13, 16–19).



**Fig. 3.** Excessive cardiac mortality probability steam and leaf plot for radiation therapy gated at deep inspiration and free breathing radiation therapy treatment plans in the respiration-gated radiotherapy group



**Fig. 4.** Radiation induced pneumonitis probability steam and leaf plot for radiation therapy gated at deep inspiration and free breathing radiation therapy treatment plans in the respiration-gated radiotherapy group

The aim of radiotherapy is not only to cure patient from cancer, but also to achieve high quality of life after completion of radiotherapy. That is why it is essential to introduce new normal tissue sparing radiotherapy methods into clinical practice, to achieve better balance between necessarily aggressive treatment and radiotherapy complications.

NTCP analysis even nowadays cannot be used directly for radiotherapy plan evaluation, but it is a very important tool for comparison of radiotherapy plans and even different radiotherapy methods (10). NTCP analysis can assist in finding of new ways to reduce radiotherapy-induced complication rate (22, 46).

Respiratory-gated (breathing adapted) radiotherapy is a new radiotherapy method, recently introduced into clinical practice. In 2006, Korreman et al. published the first review on clinical data devoted to heart and lung NTCP reduction, using breathing adapted radiotherapy in patients with breast cancer (50). Patients, which received radiotherapy to breast and regional lymph node areas, comparing deep inspiration breath hold technique with free breathing technique and free breathing, deep inspiration-gated technique were included in that investigation. Main conclusion of Korreman et al. was that radiotherapy with synchronization on deep inspiration significantly reduces heart and lung NTCP for patients with breast cancer.

In our investigation, data of the patients with early-stage breast cancer, which underwent breast-conserving surgery and received postoperative radiation therapy only to left breast, are analyzed. At present moment, this is the only published study, which includes respiratory-gated radiotherapy plan analysis for such a homogeneous group of breast-conserving therapy patients (37, 50, 51).

In the group, receiving standard radiation therapy, mean heart complication probability was 1.3%, but in the RGRT group, the mean value of this parameter was 0.2%. Mean lung complication probability was 0.6% and 0.3% for groups, which received standard radiotherapy and RGRT, respectively.

Using RGRT, excessive cardiac mortality probability was reduced by 83% as compared to the control group ( $P < 0.00001$ ). Reduction of this parameter allows concluding that live expectancy of these women will not be reduced due to radiation therapy complications. This is a very important result of present study, proving clinical benefit of RGRT in case of breast-conserving therapy for patients with early-stage left-sided cancer.

Pneumonitis probability was reduced in the RGRT

group by 55%, in comparison with the standard radiation therapy group ( $P = 0.01270$ ).

NTCP data analysis of two plans for each patient in the RGRT group (deep inspiration plan and free breathing plan) has shown a statistically significant reduction of heart and lung complication probabilities, achieved by the use of deep inspiration-gated radiation therapy. Using treatment gated on deep inspiration, the mean value of excessive cardiac mortality probability was reduced by 86% as compared with free breathing radiotherapy plans of the same patients ( $P = 0.00008$ ). Maximal value of excessive cardiac mortality probability in free breathing plans was 9.0%, which was reduced to 0.6% by the use of DIVBH respiratory-gated radiation therapy. The mean value of lung pneumonitis probability was reduced by the use of RGRT by 71% ( $P = 0.00012$ ).

Remouchamps et al. and Koremann et al. recently performed two NTCP evaluation studies on respiratory-gated radiotherapy (37, 50). Study by Remouchamps et al. has shown a significant reduction of heart and lung complication probabilities using moderate DIBH with active breathing control device as compared with FB radiotherapy (37). Using moderate DIBH, the mean lung NTCP was reduced by 66% and mean heart NTCP was reduced by 85% (37). Study by Koremann et al. has shown the results comparable to study by Remouchamps et al.: the mean NTCPs were reduced by 81% and 94% for lung and heart, respectively (50). In both mentioned studies, NTCP values for excessive cardiac mortality were calculated using the same RS model and the same coefficients as in the present study. For lung tissue, both Remouchamps et al. and Koremann et al. were using different radiobiological model (37, 50), with coefficients obtained by Kwa et al. from a heterogeneous set of data, including lung cancer and Hodgkin disease irradiation (26). Furthermore, abovementioned studies by Koremann et al. and Remouchamps et al. included data of a heterogeneous set of patients, with some of the patients receiving radiation therapy with deep tangential fields, for inclusion of internal mammary nodes in volume of therapeutic dose (37, 50). This can explain greater advantage in heart and lung sparing as compared to results of the present study.

A statistically significant NTCP reduction achieved by the use of respiratory-gated radiotherapy for patients with early-stage breast cancer is a very important result of the present study. Expected lifespan of these patients is long, and goal of the treatment is not only to treat cancer, but also not to induce serious injury in these otherwise healthy patients. Reduction

of cardiac and pulmonary complications allows insuring high quality of life of treated patients with early-stage breast cancer.

### Conclusions

Use of respiratory-gated radiation therapy, gated on deep inspiration, for postoperative treatment of patients with early-stage breast cancer significantly reduces excessive cardiac mortality probability and serious pulmonary complication probability, as compared with standard radiation therapy techniques. Mean probability of excessive cardiac mortality was reduced by use of respiratory-gated radiotherapy by 82% as compared with the control group and by 75%

as compared with free breathing plan of the same patient. Mean probability of lung pneumonitis was reduced by use of respiratory-gated therapy by 53% as compared with the control group, and by 59% as compared with free breathing plan of the same patient. This is especially important from point of view of heart complication probability, as excessive cardiac mortality remains one of the important issues of postoperative breast irradiation in patients with early-stage breast cancer.

### Acknowledgments

Latvian Governmental Scientific Investigations Program supported the present study.

## Sergančiju krūties vēža ankstyvosiomis stadijomis širdies ir plaučių komplikaciju tikimybių analizė po spindulinio gydymo

Olga Utehina<sup>1,2</sup>, Sergejs Popovs<sup>1,2</sup>, Dace Purina<sup>1,2</sup>, Ingrida Slosberga<sup>1,2</sup>, Ilga Vevere<sup>1,2</sup>,  
Dzintars Emzins<sup>1,2</sup>, Juris Berzins<sup>1,2</sup>, Konstantinas Povilas Valuckas<sup>3</sup>,  
Ernestas Janulionis<sup>3</sup>, Albert Miller<sup>3</sup>

<sup>1</sup>Rygos Rytų klinikinės universitetinės ligoninės Latvijas onkologijos centras,

<sup>2</sup>Latvijas universitetas, Latvija, <sup>3</sup>Vilniaus universiteto Onkologijos institutas, Lietuva

**Raktažodžiai:** spindulinis gydymas su kvėpavimo kontrole, ankstyvųjų stadijų krūties vėžys, krūtį tausojamasis gydymas, normalių audinių komplikacijų tikimybė.

**Santrauka.** *Tikslas.* Šios studijos tikslas – įvertinti radiobiologinę postoperacinio spindulinio gydymo su kvėpavimo kontrole klinikinę reikšmę sergančioms ankstyvąja kairės krūties vėžio stadija po krūtį tausojamosios operacijos.

*Duomenys ir metodai.* Išanalizuota 80 sergančių ankstyvosios stadijos krūties vėžiu (I ir II stadijų) spindulinis gydymas, kai buvo švitinama visa krūtis po tausojamosios operacijos. Kontrolinę grupę sudarė 47 ligonės, kurioms buvo skirtas standartinis spindulinis gydymas, ir grupę su kvėpavimo kontrole (RG) sudarė 33 ligonės, kurioms buvo skirtas spindulinis gydymas su kvėpavimo kontrole giliai įkvėpiant. Normalių audinių komplikacijų tikimybė, sukelianti širdies komplikacijas ir kliniškai patvirtintą spindulinį pneumonitą, apskaičiuota visoms šios studijos pacientėms naudojant santykinio nuoseklumo (angl. *relative seriality*) modelį. Išanalizuota 113 spindulinio gydymo planų, įskaitant ir laisvo kvėpavimo planus grupėje su kvėpavimo kontrole.

*Rezultatai.* Pneumonito tikimybė buvo 0,6 proc. (intervalas 0,0–2,8 proc.) ir 0,3 proc. (0,0–1,2 proc.), atitinkamai kontrolinėje grupėje ir grupėje su kvėpavimo kontrole. Širdies komplikacijų atsirado 1,3 proc. (0,0–5,0 proc.) ir 0,2 proc. (0,0–2,8 proc.), atitinkamai kontrolinėje grupėje ir grupėje su kvėpavimo kontrole. Taikant spindulinį gydymą su kvėpavimo kontrole, normalių audinių komplikacijų tikimybė buvo sumažinta 83 proc. ( $p < 0,00001$ ) ir 55 proc. ( $p = 0,01270$ ), atitinkamai širdies komplikacijoms ir kliniškai patvirtintam pneumonitui.

*Išvados.* Spindulinis gydymas su kvėpavimo kontrole, skiriamas ankstyvosios stadijos krūties vėžiui gydyti, žymiai sumažina papildomų širdies komplikacijų ir plaučių komplikacijų tikimybę palyginus su standartiniais spindulinio gydymo metodais. Tai ypač svarbu dėl širdies komplikacijų tikimybės, nes širdies komplikacijos yra viena svarbiausių ankstyvosios stadijos pooperacinio spindulinio krūties vėžio gydymo problemų.

Adresas susirašinėti: O. Utehina, Rygos Rytų klinikinės universitetinės ligoninės Latvijas onkologijos centras, Hipokrata 4, 1079 Ryga, Latvija El. paštas: olgautehina@mits.lv



## References

- EBCTCG. Effects of radiotherapy and surgery in early breast cancer. An overview of randomized trials. *N Engl J Med* 1995; 333(22):1444-55.
- Fisher B, Anderson S, Bryant J, Margolese RG, Deutsch M, Fisher ER, et al. Twenty-year follow-up of a randomized trial comparing total mastectomy, lumpectomy, and lumpectomy plus irradiation for the treatment of invasive breast cancer. *N Engl J Med* 2002;347(16):1233-41.
- Bartelink H, Horiot JC, Poortmans P, Struikmans H, Van den Bogaert W, Barillot I, et al. Recurrence rates after treatment of breast cancer with standard radiotherapy with or without additional radiation. *N Engl J Med* 2001;345(19):1378-87.
- Veronesi U, Cascinelli N, Mariani L, Greco M, Saccozzi R, Luini A, et al. Twenty-year follow-up of a randomized study comparing breast-conserving surgery with radical mastectomy for early breast cancer. *N Engl J Med* 2002;347(16):1227-32.
- Petro R. Worldwide meta-analysis of breast cancer treatment – EBCTCG 2005: an update. *Eur J Cancer Suppl* 2005;3:3-3.
- Buchholz TA, Woodward WA, Duan Z, Fang S, Oh JL, Tereffe W, et al. Radiation use and long-term survival in breast cancer patients with T1, T2 primary tumors and one to three positive axillary lymph nodes. *Int J Radiat Oncol Biol Phys* 2008;71(4): 1022-7.
- Vicini FA, Goldstein NS, Wallace M, Kestin L. Molecular evidence demonstrating local treatment failure is the source of distant metastases in some patients treated for breast cancer. *Int J Radiat Oncol Biol Phys* 2008;71(3):689-94.
- Budach W, Dunst J, Feyer P, Haase W, Harms W, Sautter-Bihl ML, et al. Mannheim Radiotherapie des Mammakarzinoms (DEGRO 2005). (Breast cancer radiotherapy guidelines.) *Strahlenther Onkol* 2006;182(1):1-28.
- Sautter-Bihl ML, Budach W, Dunst J, Feyer P, Haase W, Harms W, et al. DEGRO practical guidelines for radiotherapy of breast cancer I: breast-conserving therapy. *Strahlenther Onkol* 2007;183(12):661-6.
- Perez CA, Brady LW. Principles and practice of radiation oncology. 5th ed. Philadelphia: Lippincott Williams and Wilkins; 2008.
- Muren LP, Maurstad G, Hafslund R, Anker G, Dahl O. Cardiac and pulmonary doses and complication probabilities in standard and conformal tangential irradiation in conservative management of breast cancer. *Radiother Oncol* 2002;62(2): 173-83.
- Borger J, Hoening M, Boersma L. Cardiotoxic effects of breast conserving therapy in patients with left-sided breast cancer treated with tangential fields. A retrospective multicenter study. *Radiother Oncol* 2006;87(Suppl 1):S37.
- Stewart JR, Fajardo LF, Gillette SM, Constine LS. Radiation injury to the heart. *Int J Radiat Oncol Biol Phys* 1995;31(5): 1205-11.
- Hall EK. Radiobiology for radiologist. 5th edition. USA: Lippincott Williams & Wilkins; 2000.
- Borger JH, Hoening MJ, Boersma LJ, Snijders-Keilholz A, Aleman BM, Lintzen E, et al. Cardiotoxic effects of tangential breast irradiation in early breast cancer patients: the role of irradiated heart volume. *Int J Radiat Oncol Biol Phys* 2007; 69(4):1131-8.
- Paszat LF, Vallis KA, Benk VM, Groome PA, Mackillop WJ, Wielgosz A. A population-based case-cohort study of the risk of myocardial infarction following radiation therapy for breast cancer. *Radiother Oncol* 2007;82(3):294-300.
- Hoening MJ, Aleman BM, van Rosmalen AJ, Kuenen MA, Klijn JG, van Leeuwen FE. Cause-specific mortality in long-term survivors of breast cancer: a 25-year follow-up study. *Int J Radiat Oncol Biol Phys* 2006;64(4):1081-91.
- Host H, Brennhovd IO, Loeb M. Postoperative radiotherapy in breast cancer: long-term results from the Oslo study. *Int J Radiat Oncol Biol Phys* 1986;12(5):727-32.
- Rutqvist LE, Lax I, Fornander T, Johansson H. Cardiovascular mortality in a randomized trial of adjuvant radiation therapy versus surgery alone in primary breast cancer. *Int J Radiat Oncol Biol Phys* 1992;22(5):887-96.
- Jagsi R, Griffith KA, Koelling T, Roberts R, Pierce LJ. Rates of myocardial infarction and coronary artery disease and risk factors in patients treated with radiation therapy for early-stage breast cancer. *Cancer* 2007;109(4):650-7.
- Gutt R, Hwang W, Solin LJ. Cardiac morbidity and mortality after breast conservation treatment in early stage breast cancer patients with pre-existing cardiac disease. *Int J Radiat Oncol Biol Phys* 2006;66(Suppl 3):S106.
- Gagliardi G, Lax I, Söderström S, Gyenes G, Rutqvist LE. Prediction of excess risk of long-term cardiac mortality after radiotherapy of stage I breast cancer. *Radiother Oncol* 1998; 46(1):63-71.
- Lind PARM, Marks LB, Hardenbergh PH, Clough R, Fan M, Hollis D, et al. Technical factors associated with radiation pneumonitis after local ± regional radiation therapy for breast cancer. *Int J Radiat Oncol Biol Phys* 2002;52:137-143.
- Lingos TI, Recht A, Vicini F, Abner A, Silver B, Harris JR. Radiation pneumonitis in breast cancer patients treated with conservative surgery and radiation therapy. *Int J Radiat Oncol Biol Phys* 1991;21(2):355-60.
- Graham MV, Purdy JA, Emami B, Harms W, Bosch W, Lockett MA, et al. Clinical dose-volume histogram analysis for pneumonitis after 3D treatment for non-small cell lung cancer (NSCLC). *Int J Radiat Oncol Biol Phys* 1999;45(2):323-9.
- Kwa SL, Lebesque JV, Theuws JC, Marks LB, Munley MT, Bentel G, et al. Radiation pneumonitis as a function of mean lung dose: an analysis of pooled data of 540 patients. *Int J Radiat Oncol Biol Phys* 1998;42(1):1-9.
- McDonald S, Rubin P, Phillips TL, Marks LB. Injury to the lung from cancer therapy: clinical syndromes, measurable endpoints, and potential scoring system. *Int J Radiat Oncol Biol Phys* 1995;31(5):1187-203.
- Rancati T, Wennberg B, Lind P, Svane G, Gagliardi G. Early clinical and radiological pulmonary complications following breast cancer radiation therapy: NTCP fit with four different models. *Radiother Oncol* 2007;82(3):308-16.
- Steel GG, editor. Basic clinical radiobiology. London: Arnold; 2002.
- Overgaard M, Hansen PS, Overgaard J, Rose C, Andersson M, Bach F, et al. Postoperative radiotherapy in high-risk premenopausal women with breast cancer who receive adjuvant chemotherapy. Danish Breast Cancer Cooperative Group 82b trial. *N Engl J Med* 1997;337(14):949-55.
- Overgaard M, Jensen MB, Overgaard J, Hansen PS, Rose C, Andersson M, et al. Postoperative radiotherapy in high-risk postmenopausal breast-cancer patients given adjuvant tamoxifen: Danish Breast Cancer Cooperative Group DBCG 82c randomised trial. *Lancet* 1999;353(9165):1641-8.
- Ragaz J, Jackson SM, Le N, Plenderleith IH, Spinelli JJ, Basco VE, et al. Adjuvant radiotherapy and chemotherapy in node-positive premenopausal women with breast cancer. *N Engl J Med* 1997;337(14):956-62.
- Van de Steen J, Soete G, Storme G. Adjuvant radiotherapy

- for breast cancer significantly improves overall survival: the missing link. *Radiother Oncol* 2000;55(3):263-72.
34. Mundt AJ, Roeske JC. Intensity modulated radiation therapy. A clinical perspective. London: BC Decker Inc; 2005.
35. Schultz-Hector S, Trott KR. Radiation-induced cardiovascular diseases: is the epidemiologic evidence compatible with the radiobiologic data? *Int J Radiat Oncol Biol Phys* 2007;67(1): 10-8.
36. Korreman SS, Pedersen AN, Josipović M, Aarup LR, Juhler-Nøttrup T, Specht L, et al. Cardiac and pulmonary complication probabilities for breast cancer patients after routine end-inspiration gated radiotherapy. *Radiother Oncol* 2006;80(2): 257-62.
37. Remouchamps VM, Vicini FA, Sharpe MB, Kestin LL, Martinez AA, Wong JW. Significant reductions in heart and lung doses using deep inspiration breath hold with active breathing control and intensity-modulated radiation therapy for patients treated with locoregional breast irradiation. *Int J Radiat Oncol Biol Phys* 2003;55(2):392-406.
38. Remouchamps VM, Letts N, Vicini FA, Sharpe MB, Kestin LL, Chen PY, et al. Initial clinical experience with moderate deep-inspiration breath hold using an active breathing control device in the treatment of patients with left-sided breast cancer using external beam radiation therapy. *Int J Radiat Oncol Biol Phys* 2003;56(3):704-15.
39. Pedersen AN, Korreman S, Nyström H, Specht L. Breathing adapted radiotherapy of breast cancer: reduction of cardiac and pulmonary doses using voluntary inspiration breath-hold. *Radiother Oncol* 2004;72(1):53-60.
40. Korreman SS, Pedersen AN, Nøttrup TJ, Specht L, Nyström H. Breathing adapted radiotherapy for breast cancer: comparison of free breathing gating with the breath-hold technique. *Radiother Oncol* 2005;76(3):311-8.
41. Burman C, Kutcher GJ, Emami B, Goitein M. Fitting of normal tissue tolerance data to an analytic function. *Int J Radiat Oncol Biol Phys* 1991;21(1):123-35.
42. Burman CM. Fitting of tissue tolerance data to analytic function: improving the therapeutic ratio. *Front Radiat Ther Oncol* 2002;37:151-62.
43. Kallman P, Agren A, Brahme A. Tumor and normal tissue responses to fractionated non-uniform dose delivery. *Int J Radiat Biol* 1992;62(2):249-62.
44. Fowler JF. The linear-quadratic formula and progress in fractionated radiotherapy. *Br J Radiol* 1989;62(740):679-94.
45. Muller-Runkel R, Vijayakumar S. Equivalent total doses for different fractionation schemes, based on the linear quadratic model. *Radiology* 1991;179(2):573-7.
46. Gagliardi G, Bjöhle J, Lax I, Ottolenghi A, Eriksson F, Liedberg A, et al. Radiation pneumonitis after breast cancer irradiation: analysis of the complication probability using the relative seriality model. *Int J Radiat Oncol Biol Phys* 2000; 46(2):373-81.
47. Parkin DM, Bray F, Ferlay J, Pisani P. Global Cancer Statistics, 2002. *CA Cancer J Clin* 2005;55:74-108.
48. Singletary SE. Breast cancer management: the road to today. *Cancer* 2008;113(7 Suppl):1844-9.
49. White JR, Halberg FE, Rabinovitch R, Green S, Haffty BG, Solin LJ, et al. American College of Radiology appropriateness criteria on conservative surgery and radiation: stages I and II breast carcinoma. *J Am Coll Radiol* 2008;5(6):701-13.
50. Korreman SS, Pedersen AN, Aarup LR, Nøttrup TJ, Specht L, Nyström H. Reduction of cardiac and pulmonary complication probabilities after breathing adapted radiotherapy for breast cancer. *Int J Radiat Oncol Biol Phys* 2006;65(5):1375-80.
51. Stranzl H, Zurl B. Postoperative irradiation of left-sided breast cancer patients and cardiac toxicity. *Strahlenther Onkol* 2008; 184(7):354-8.

*Received 10 October 2008, accepted 3 April 2009*  
*Straipsnis gautas 2008 10 10, priimtas 2009 04 03*